

Intelligent environmental monitoring on the seafloor

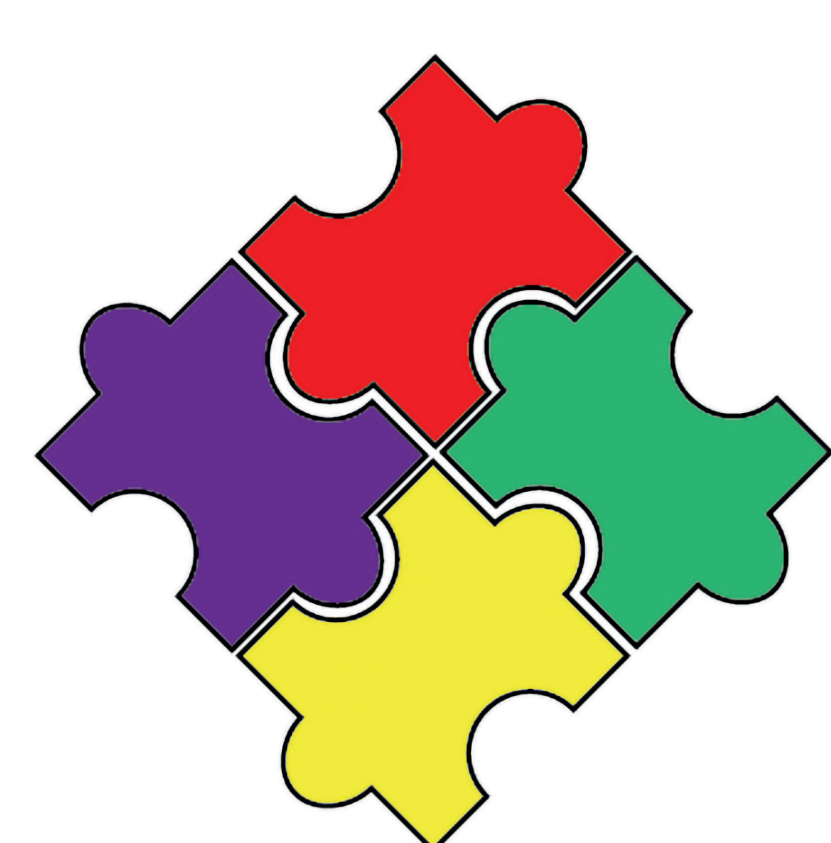
The **MOLA** system consists of compact sensor platforms that can collect physical and chemical data on the seafloor as landers and on the sea surface as buoys. Distributed real-time data analysis and acoustical underwater communication enable intelligent measurement networks that can be monitored and controlled from shore.



Find out more

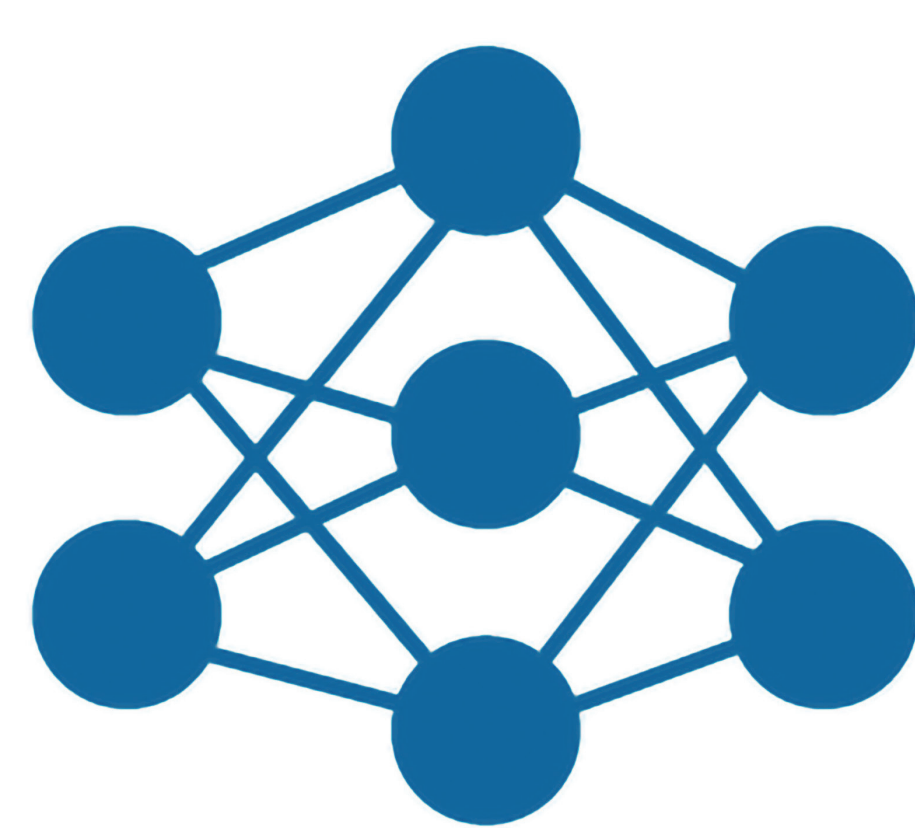
Contact MOLA: Jens Karstens, jkarstens@geomar.de

MOLA Project Highlights



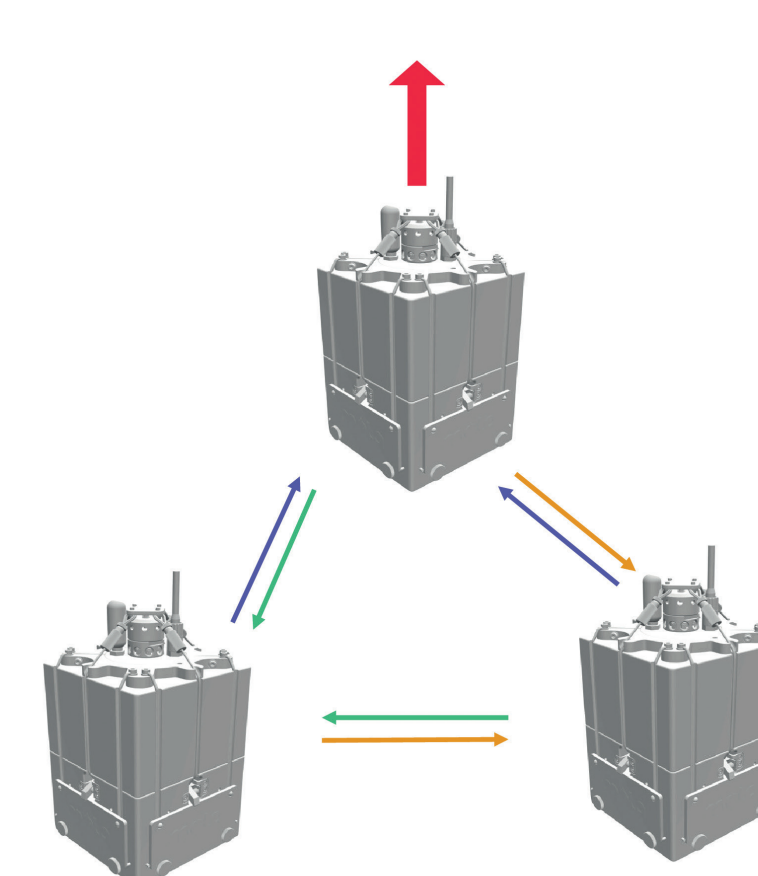
► Modularity

A variety of chemical and physical sensors can be integrated



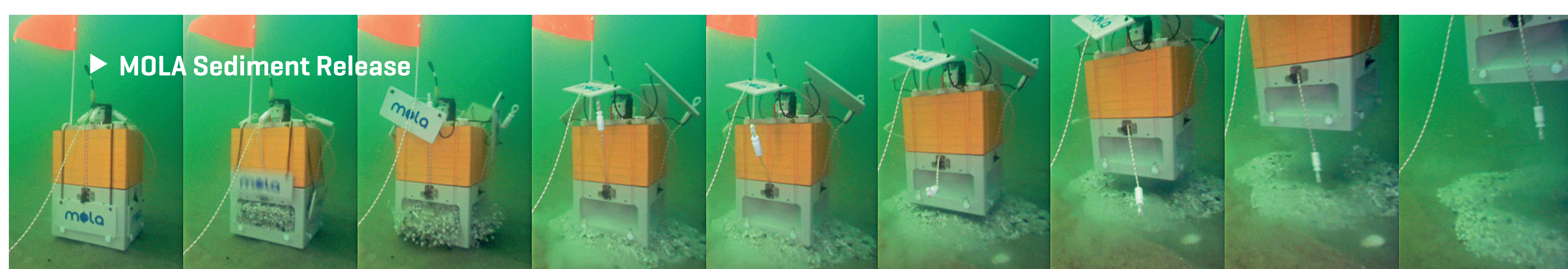
► Autonomy

Measured data can be analysed autonomously on site with the help of A.I.



► Communication

Acoustic communication in the underwater network and with the shore via radio



Technology Transfer and Industry Cooperation at GEOMAR

The Research Funding and Transfer Office at GEOMAR supports partners from industry, science and society in finding joint research opportunities. Together we further develop the innovative research results from GEOMAR in order to bring them into application.

Contact Technology Transfer: Kathrin Krüger-Borgwardt, technologietransfer@geomar.de



Find out more

Funded by: Helmholtz Transfer-Campaign