

SPOT-KI

NORTHDOCKS

Funded by:



A robot as a gas detection dog

SPOT-KI is developing a “Safety-as-a-Service” AI application, in which large-scale plants can be automatically and remotely monitored by the **SPOT-KI** robot dog with the help of a highly sensitive multi-gas sensor.

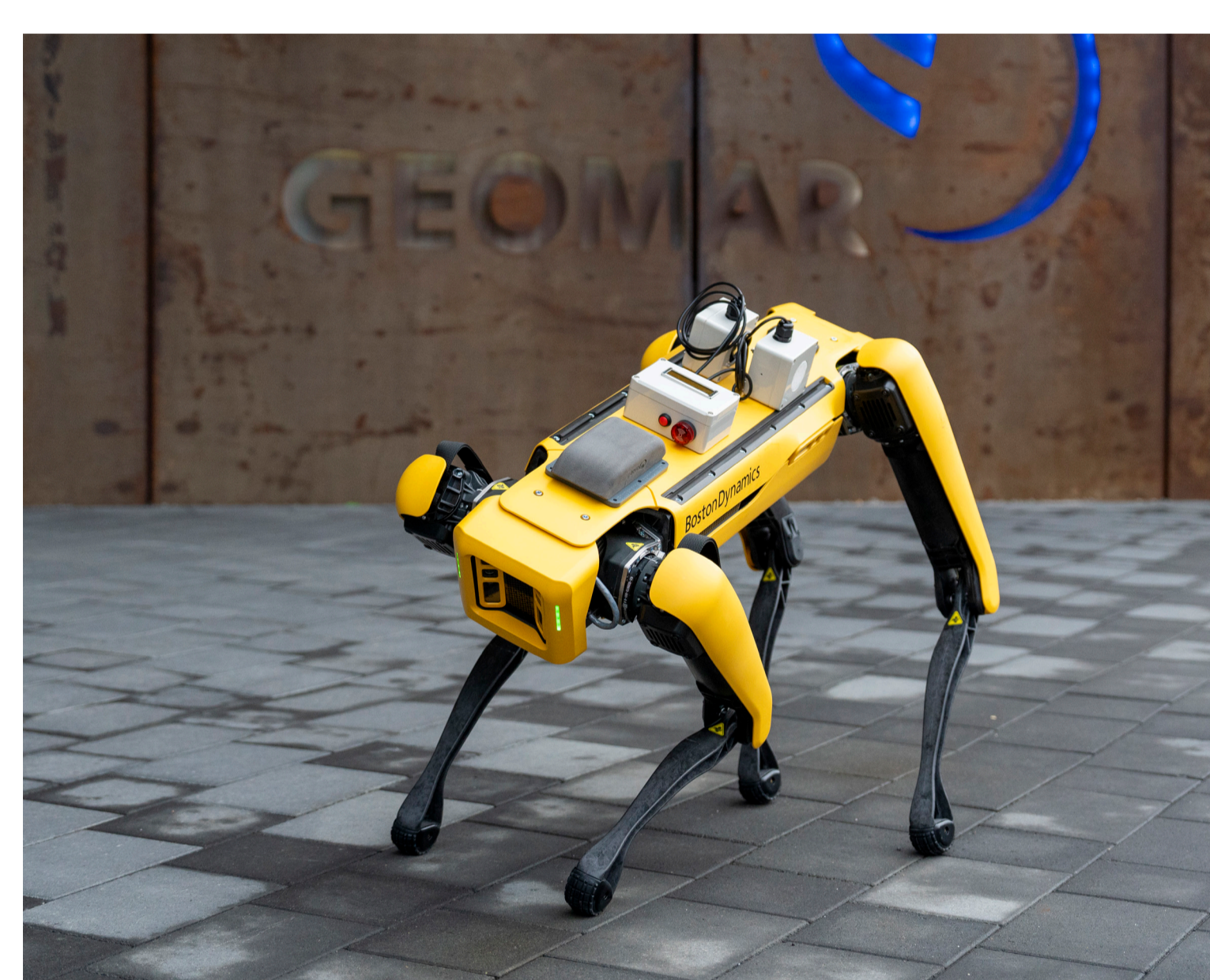


Contact

SPOT-KI is a joint project between GEOMAR and Northdocks GmbH, a spin-off of Kiel University.

Contact SPOT-KI: Roberto Benavides, rbenavides@geomar.de

SPOT-KI Project Highlights



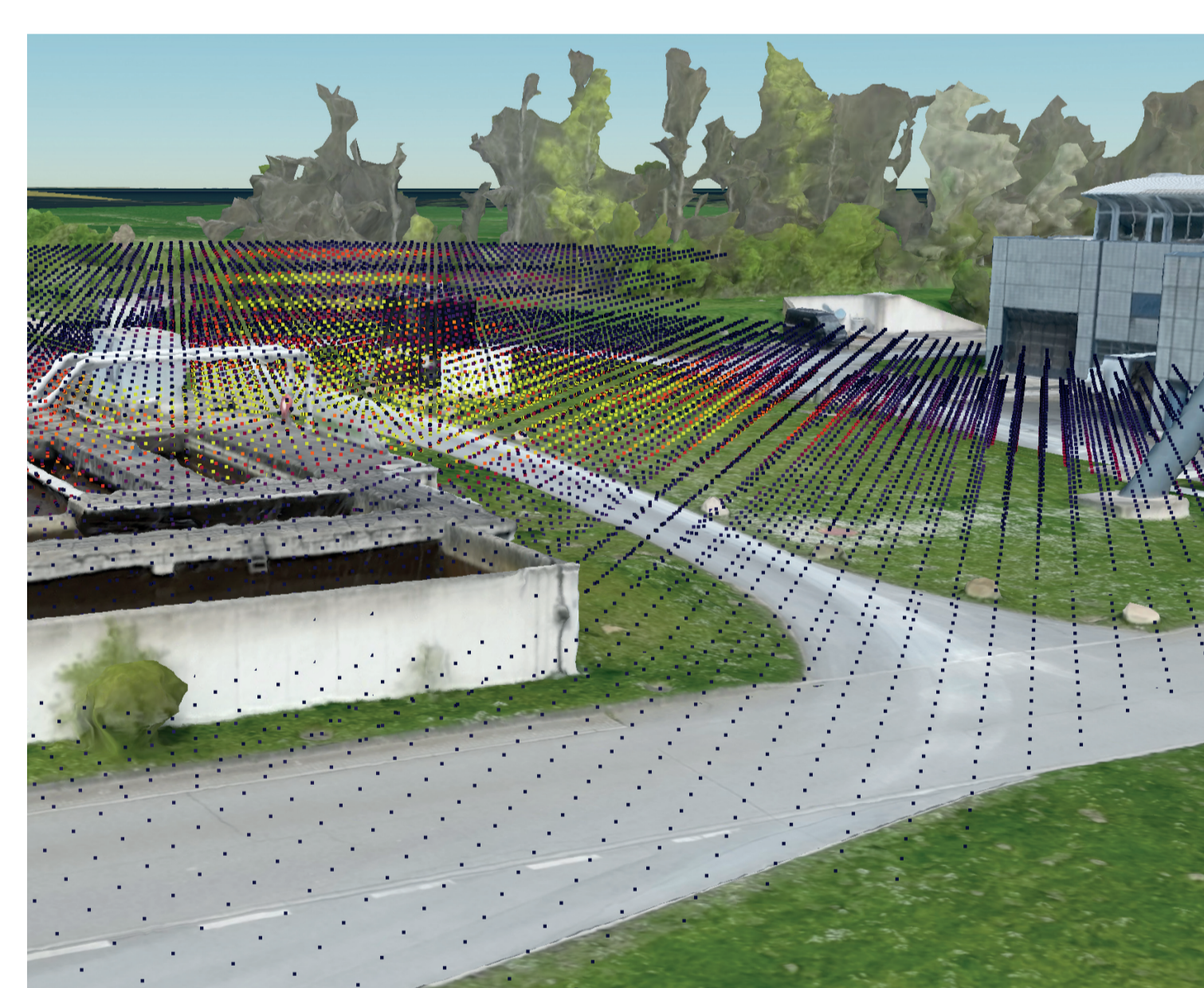
► Robotics

Autonomous monitoring of industrial plants with the gas-sniffing robot dog SPOT



► Sensors

Detection and identification of up to 64 gases in the lowest concentrations [1 ppb, parts per billion]



► AI, Digital twin

Independent & automated leak location for sudden changes in ambient gas composition. Instant data analysis and digital twin integration

Technology Transfer and Industry Cooperation at GEOMAR

The Research Funding and Transfer Office at GEOMAR supports partners from industry, science and society in finding joint research opportunities. Together we further develop the innovative research results from GEOMAR in order to bring them into application.

Contact Technology Transfer: Kathrin Krüger-Borgwardt, technologietransfer@geomar.de



Find out more